

CERTIFICATE OF LOCATION OF GOVERNMENT CORNER

CENTER Corner of Section 18, Township 108N, Range 40W, 5TH P.M.

STATE OF MINNESOTA, County of MURRAY

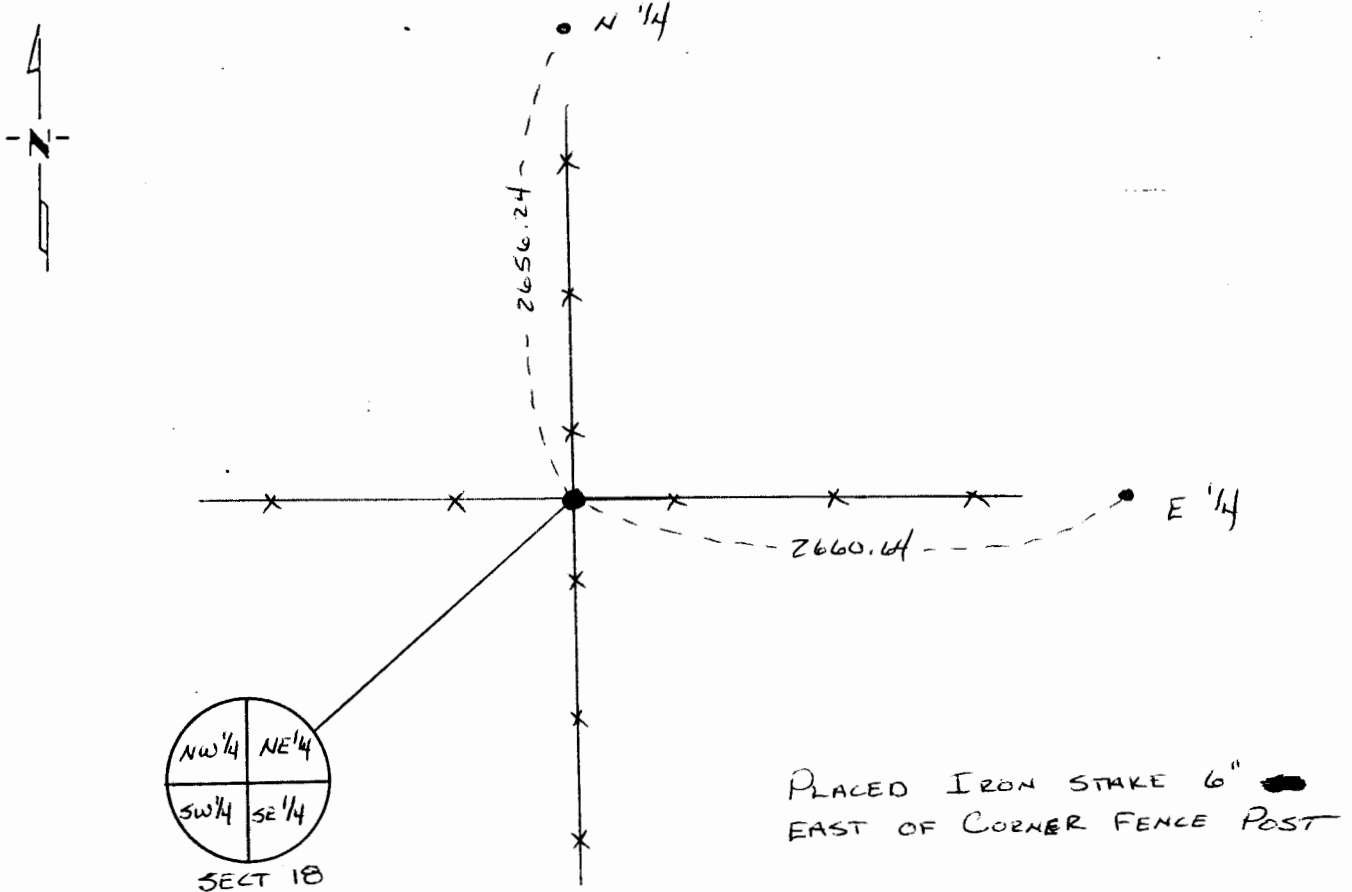
At the corner location shown on the sketch:

On 10/26/91 found a REMAINS OF WOOD STAKE 1 FT BELOW
DATE SURFACE

left monument as found, lowered monument, removed monument (explain)

On 10/26/91 placed a PLACED 5/8" X 30" IRON STAKE, WITH RLS 6700
DATE CAP, IN CENTER OF WOOD STAKE

SKETCH OF REFERENCE TIES



Statement of evidence relative to this corner location is on back of page.

I hereby certify that this document and the data contained herein was prepared by me or under my direct supervision.

C. P. [Signature] 10-29-91
SIGNATURE DATE

Registration No. 6700

- Land Surveyor, Professional Engineer
 County Surveyor, County Engineer

OFFICE OF THE COUNTY RECORDER

County of MURRAY

I hereby certify that this document was filed in the Co. Recorders office at _____ .M. on the _____ day of _____ A.D., 19__

County Recorder James V. Johnson

By NOV 7 1991, Deputy

DOCUMENT NO. _____